



L'Énergie Sans Limite !
Safe Energy for Life !



Networks & critical applications - Industrial Environments



The E4 VALUE range is equipped with microprocessor controlled On Line Double Conversion technology and delivers a perfect sinewave output current for lower-budget critical applications.

Value

From 1 to 10k VA

● An advanced technology

Equipped with the **On Line Double Conversion controlled by microprocessor**, E4 VALUE range delivers **perfect sinewave output current** and provides thorough and effective protection of critical devices.

● Smart features adapted to all situations

Equipped with smart features (control by microprocessor, Energy saving ECO mode or cold start function), E4 Value range offer **RS 232 and/or USB** communication ports enable UPS to communicate with the various stations and IT servers it is protecting.

An **intuitive display** (LED for models from 1000 to 3000VA and LCD for models from 4000VA to 10k VA) shows the UPS status : ON/OFF, operating mode configuration, voltage setting, programmable outlet setting...

Economic and reliable solution for lower-budget critical applications



E4 Value
1000 VA

E4 Value
1500/2000 VA

E4 Value
3000 VA

E4 Value
4000/5000 VA

E4 Value
6000/10 kVA



On Line Double Conversion Technology



USB and/or RS232 communication ports (depending on models)



Remote control software



Up to 30 min. backup time (depending on connected load)

ADAQUATE SOLUTIONS FOR ALL SITUATIONS

Smart features

○ **UPS controlled by microprocessor:** this feature offers perfect sinewave output current to the connected devices.

Energy saving ECO mode : it allows energy and cost savings. In addition, a static bypass power supply via the UPS prevents from power cuts in case of overload or other external incident.

Backup time : up to 30 minutes for the protection of one server and 2 computers for example, depending on the connected load.

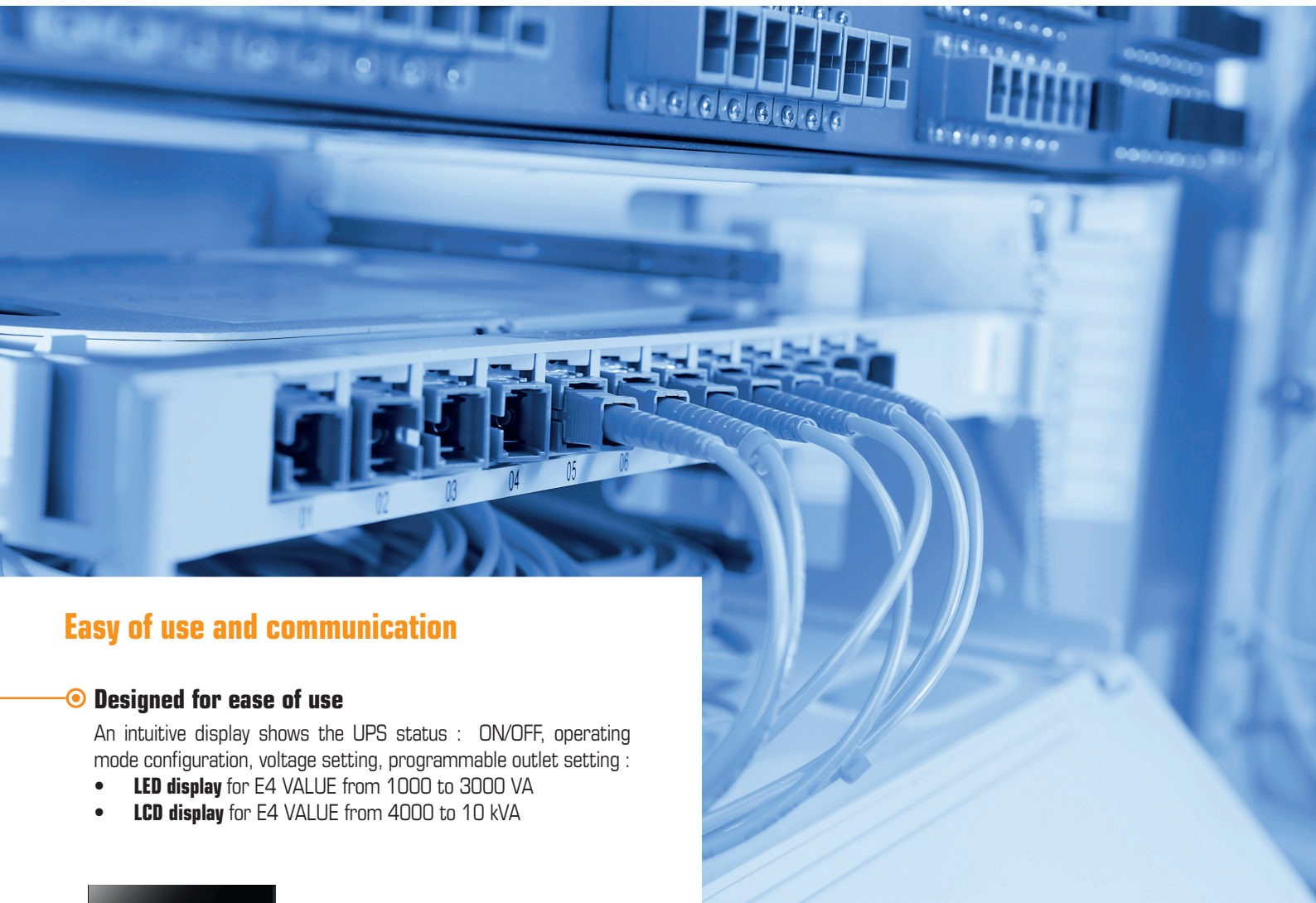
Cold start function: It enables during emergency situation involving a total power cut to be overcome by starting the UPS using batteries without the mains power supply.

Energy Saving ECO Mode



Efficiency of up to 95% for the 1 to 3 kVA model reduces energy consumption and costs.

This operating mode delivers a static bypass power supply and returns to Online Double Conversion when necessary.

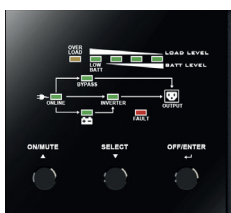


Easy of use and communication

○ Designed for ease of use

An intuitive display shows the UPS status : ON/OFF, operating mode configuration, voltage setting, programmable outlet setting :

- **LED display** for E4 VALUE from 1000 to 3000 VA
- **LCD display** for E4 VALUE from 4000 to 10 kVA



LED screen
E4 Value from 1000 to 3000 VA



LCD screen
E4 Value from 4000 to 10 kVA

○ Communication

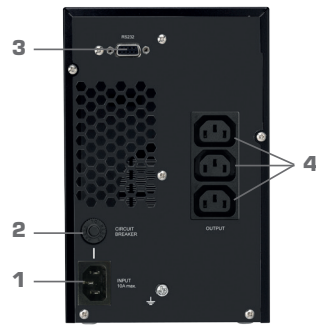
USB and/or RS 232 ports allow communication between the UPS and your various protected IT devices. This is managed using Infopower software :

- **RS232 port** for E4 VALUE from 1000 to 3000 VA
- **USB et RS 232 ports** for E4 VALUE from 4000 to 10 kVA

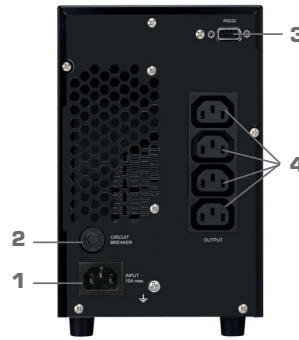
CONNECTION

E4 VALUE fom 1000 à 3000 VA

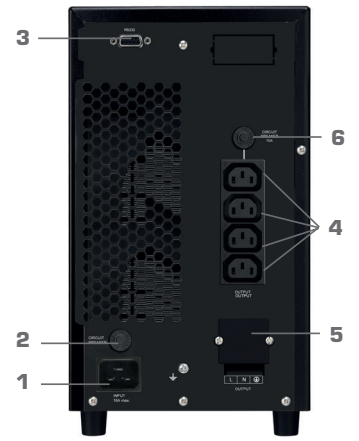
1. Input
2. Input breaker
3. RS 232 communication port
4. Output outlets
5. Output terminal
6. Output breaker



E4 Value 1000



E4 Value 1500/2000



E4 Value 3000

E4 VALUE from 4000 to 10 kVA

1. RS 232 communication port
2. Intelligent slot*
3. USB communication port
4. EPO connector
5. External battery connector
6. Input breaker
7. Input/Output terminal

*For the models E4 Value 4000/5000, communication card (USB & RS232) can be replaced by SNMP (optional)



E4 Value 4000/5000 VA



E4 Value 6000/10 kVA

OPTIONS

SNMP I Pro agent

Using the SNMP I pro agent with the E4 Value UPS devices makes it easier to manage the UPS due to its various special features:

- Connection to the Ethernet network and identification by IP address (random or fixed)
- Setting and programming a system shutdown and restart on a weekly (or other) basis
- Local or remote UPS configuration



SNMP I Pro agent



SNMP RS 232 agent (BT 505)

External Maintenance Bypass Switch (BMe)

Provides continuous power to connected equipment during a UPS's maintenance or replacement via a rotary switch

- Provides a large number of outlets for extended use
- Rack or Tower model depending on the working environment (1 to 3 kVA)
- Simple installation
- Master/Slave mode (BMe1)



BMe 1 IEC
(E4 VALUE 1000 à 3000 VA)



BMe 1 FR
(E4 VALUE 1000 à 3000 VA)

*For models E4 Value 4000/5000, SNMP I Pro agent shall be inserted at the location of the communication card (USB & RS232).



Value

From 1 to 10k VA

TECHNICAL SPECIFICATIONS

	E4 Value 1000	E4 Value 1500	E4 Value 2000	E4 Value 3000	E4 Value 4000	E4 Value 5000	E4 Value 6000	E4 Value 10k
--	---------------	---------------	---------------	---------------	---------------	---------------	---------------	--------------

GENERAL CHARACTERISTICS

Technology	On Line Double Conversion							
Power*	1000 VA	1500 VA	2000 VA	3000 VA	4000 VA	5000 VA	6000 VA	10k VA
Power factor	0,8							
IEC outlets	3	4			-			
Terminal	Yes							

PHYSICAL CHARACTERISTICS

Dim. D x W x H (mm)	220 x 145 x 282	235 x 145 x 397	335 x 190 x 421	388 x 190 x 573	369 x 190 x 688	460 x 190 x 688		
Net weight (kg)	8.6	16.1	25.2	46	61	66		

INPUT

Voltage	[100/110/115/120/127VAC] or [200/208/220/230/240VAC]**	208/220/230/240VAC
Voltage range	40 Hz ~ 70 Hz	46 Hz ~ 54 Hz or 56 Hz ~ 64 Hz
Power factor	> 0,99 @ 100% load	

OUTPUT

Voltage	[100/110/115/120/127VAC] or [200/208/220/230/240VAC]**	208/220/230/240VAC
Voltage regulation	+/- 1%	
Frequency range (Synchronized range)	47~ 53 Hz or 57 ~ 63 Hz	46 Hz ~ 54 Hz or 56 Hz ~ 64 Hz
Frequency range (Batt mode)	50 Hz ± 0.25 Hz or 60Hz ± 0.3 Hz	50 Hz or 60 Hz +/- 0.1Hz
Crest ratio	3 : 1	
Harmonic distortion	<= 3% THD (Linear Load); <= 6% THD (Non-linear Load)	
Transfer time	Line mode to battery mode	0 ms
	Inverter to Bypass	4 ms (Typical)
Waveform	Pure sinewave	

EFFICIENCY

AC mode	88%	89%	90%	92%	92%	93%
Battery mode	83%	87%	88%	89%	90%	91%

BATTERY

Recharge time	4 hours recover to 90% capacity	9 hours recover to 90% capacity			
Charging current	1A				
Charging current	27.4VDC ± 1%	54.7 VDC ± 1%	82.1 VDC ± 1%	163.8 VDC ± 1%	218.4 VDC ± 1%
Backup time	from 5 to 30 minutes depending on the connected load				

AFFICHAGE & INDICATEURS

LED / LCD	LED	LCD
Alarmer sonores	Load level, Battery level, AC mode, Battery mode, Bypass mode, and Fault indicator.	
	Battery mode, Low battery, Overload, Fault	

BYPASS

Bypass statique	Yes
Bypass manuel	Optional

MANAGEMENT / COMMUNICATION

Communication ports	RS232 port	RS232 / USB ports
Software	Infopower included software (Windows® 98/2000/2003/XP/Vista/2008, Windows® 7, 8, 10, Linux, and MAC)	
SNMP (option)	Management system through SNMP software (VMware®, Hyper V™ compatible) and web browser	

NORMS

Standard	CE RoHS	
EMC	EN62040-2: 2006+AC: 2006 (EN 61000-3-2: 2014, EN 61000-3-3: 2013, EN61000-4-2:2009, EN61000-4-3:2006+A2: 2010, EN61000-4-4: 2012, EN61000-4-5: 2006, EN61000-4-6: 2014, EN61000-4-8: 2010, EN 61000-4-11: 2004, EN61000-2-2: 2002)	EN62040-2: 2006+AC: 2006 (EN61000-2-2: 2002, EN61000-4-2: 2009, EN61000-4-3: 2006+A2: 2010, EN61000-4-4: 2012, EN61000-4-5: 2014, EN61000-4-6: 2014, EN61000-4-8: 2010)
LVD	EN 62040-1:2008+A1:2013	

SALES INFO

Warranty	2 years							
PN	67417	67425	67418	67419	67426	67420	67421	67422

* models 1-3k : derate to 60% of capacity in Frequency converter mode and to 80% when the output voltage is adjusted to 100/200/208VAC / models 4-10k : derate capacity to 60% of capacity in CVCF mode and to 90% when the output voltage is adjusted to 208VAC.

**Low voltage (110V) and High voltage (230V) are different products.

Product specifications are subject to change without further notice.

Product specifications are subject to change without further notice.

E4 Value 5000 B+

B+ VERSION

charging voltage	218.4 VDC ± 1%
Dim. D x W x H (mm)	369 x 190 x 688
Net weight (kg)	61
PN	67423

Communications solutions and remote management

USB and/or RS232 communication ports

Software :

- Simple user interface
- UPS startup and shutdown programming
- Data and events record enabling daily maintenance
- E-mail messaging to manage UPS status at all times via the local network
- Free download from the website

Package content

- 1 UPS
- 1 input cable
- 2 IEC output cables
- 1 RS 232 cable
- 1 USB cable (for models > 3 kVA)
- 1 user manual
- Infopower Software CD

Options

Designation	Réf
BMe 1 IEC 1 à 3k	61440
BMe 1 FR 1 à 3k	61441
SNMP RS 232 (BT 505) for E4 VALUE from 1000 to 3000 VA	61455
SNMP Pro I card for E4 VALUE from 4000 to 10 kVA	61156
SNMP vm Minislot card	61142

Warranty

2-year warranty against manufacturing defects under normal conditions and compliance with precautionary measures.

Warranty to be taken out on our website within 10 days of purchase.



Maintenance contract

A Maintenance contract is highly recommended: contact hotline@infosec.fr



Infosec Communication

15, rue du Moulin
44880 SAUTRON - FRANCE
Contact commercial
Tél : 02 40 76 11 77
commercial@infosec.fr

www.infosec-ups.com